



A Better Way to Configure...  
...the Only Way to Design.



## Case Study:

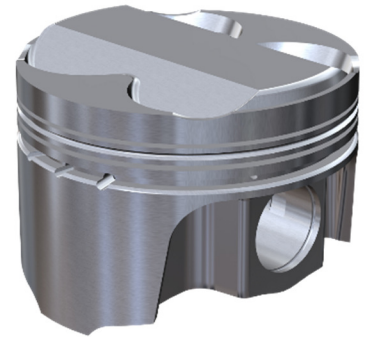
**Product:** High performance forged pistons for the motorsports market.

**Problem:** Automate creation of both 3D model and NC-code generation to reduce the elapsed time between specification and finished product while handling feature complexity.

**Solution:** Use Genus Designer's generative configurator to add and locate piston features by rule.

## Benefits

- ✓ Designs faster
- ✓ Generates G-code
- ✓ Shortens time from specification to cut metal



Wiseco Pistons offers a tremendous array of options to satisfy the requirements of its demanding customers.

These options are implemented as features on a single physical part. Designer first replaces the base forging with one of the correct size and material characteristics from a set of thousands of possibilities.

Wiseco takes advantage of Genus Designer's unique ability to generatively model the feature that compose a part in the same way as it models parts that compose assemblies. By generatively adding only the features required of a specific design, Genus Designer avoids the exponential combinatorics endemic to master modeling and easily tames what would otherwise be daunting complexity.

Genus Designer also query's the CAD model for the features and parameters required to accurately describe designed pistons and outputs G-Code for Wiseco NC machines to manufacture them.



Engineering Design Automation  
[www.genussoftware.com](http://www.genussoftware.com)

*contact your reseller*

Genus Solutions, Inc.  
30670 Bainbridge Road, Ste. 20  
Solon, OH 44139  
440.519.2902